

Church Site **FOR SALE**

E- 470 and Quincy Avenue

COPPERLEAF



- **Visibility and Interchange Access from E-470 at Quincy.**
- **Full Motion Access into Copperleaf from Quincy Avenue.**
- **Copperleaf Community Builders: Richmond American Homes, Capital Pacific Homes, Exquisite Homes.**
- **Cherry Creek School District including Eagle Crest High School and Sky Vista Middle School.**
- **Pad Ready Sites**

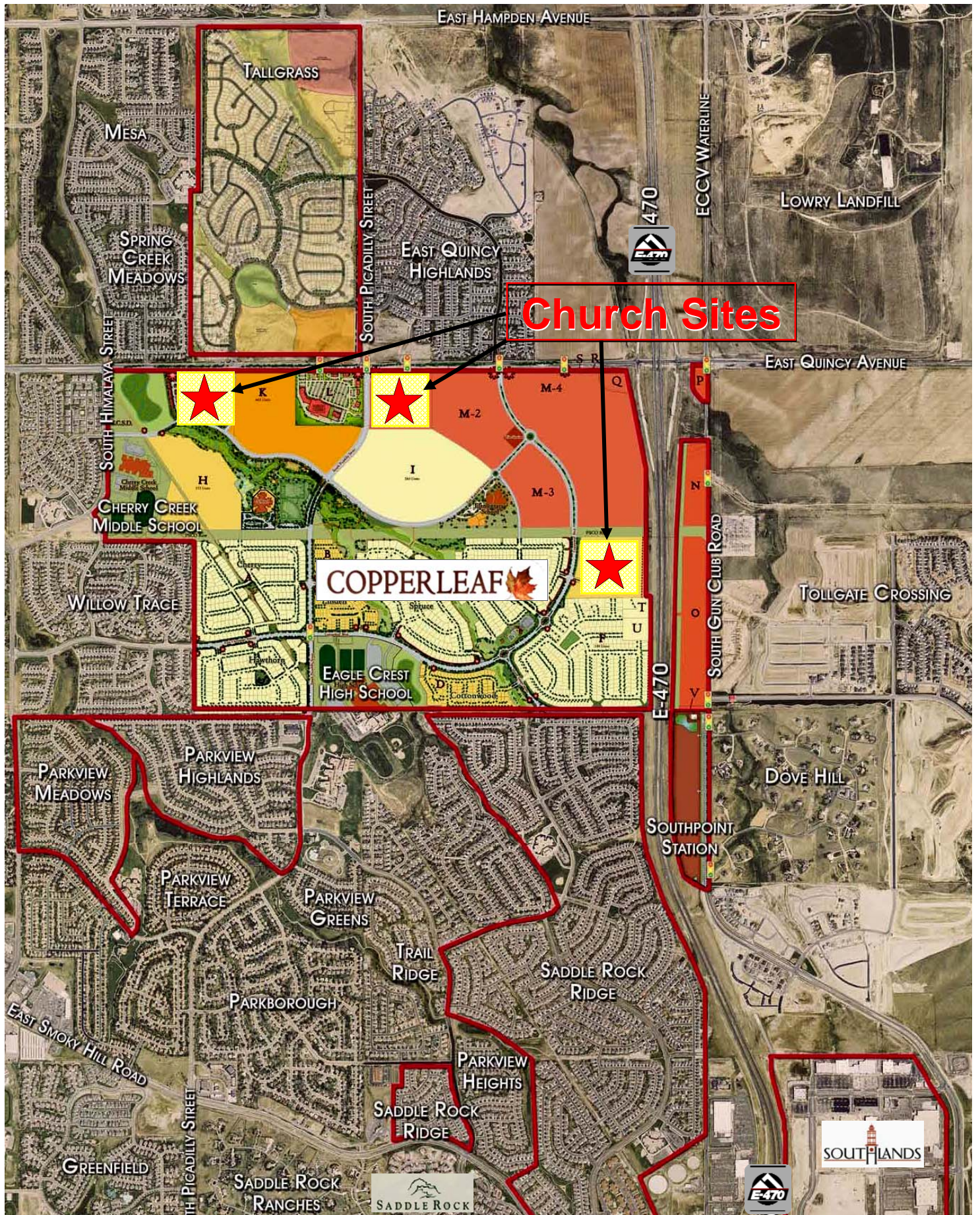
- **Traffic Counts** (2007)
E-470: 24,300 (from CDOT)
Quincy Ave: 18,200 (W of Reservoir Rd.)
- **Population** (2007)
3-Mile: 16,279 5-Mile: 77,650
- **Population** (2012)
3-Mile: 22,208 5-Mile: 94,584
- **Households:** (2007)
3-Mile: 5,312; 5-Mile: 24,701



2000 S. Colorado Blvd., Suite 250
Denver, Colorado 80222

303.534.3344





Church Sites

COPPERLEAF

The information above has been obtained from sources believed to be reliable but we make no representation nor guarantee about its accuracy. It is your responsibility to independently confirm its accuracy or completeness.